


A modern two-story house with a mix of white, grey, and stone cladding. It features large windows, some with shutters, and a balcony. The house is set against a twilight sky with soft clouds. The overall aesthetic is clean and contemporary.

# OAKWOOD RESIDENCES

LIVADIA - LARNACA

*Your own piece  
of Paradise*

A view of the same house from a lower angle, showing a swimming pool in the foreground. The pool is surrounded by a paved deck with lounge chairs and a dining table. The house has large glass doors and windows, and a car is parked in the driveway. The garden is lush with tropical plants and palm trees.

+357 96 846 075 - +357 99 347 462



Experience the pinnacle of luxury at “Oakwood Residences”, where your home truly reflects your lifestyle.



These bespoke residences are fully customizable, with our talented team ready to design your dream home.

Personalize your spaces and select stylish fixtures and finishes to create the space that's uniquely yours.

Contact us today and begin your journey to a **luxurious, customized** home in Larnaca, Cyprus.



Features

-  **x4**
-  **x3**
- double parking space
  - covered back veranda
  - barbecue bench/bar
  - two master bedroom en suite
  - swimming pool
  - spacious garden
  - sunset views
  - master suite balcony

- ✓ **15/min** drive to the Larnaca International Airport
- ✓ **5/min** drive to Larnaca downtown
- ✓ **5/min** drive to the beach

Villas Characteristics


Livadia City Centre

Villa	Beds	Baths	Internal Covered Area (sqm)	Covered Verandas (sqm)	Total Covered Area (sqm)	Uncovered Balcony (sqm)	Plot Area (sqm)	Covered Parking Area (sqm)	*Price (Euro)
1	4	3	167.05	25.90	211.35	23.25	331.74	18.40	545,000
2	4	3	167.05	25.90	211.35	23.25	315.75	18.40	530,000
3	4	3	167.05	25.90	211.35	23.25	302.10	18.40	515,000
4	4	3	167.05	25.90	211.35	23.25	289.30	18.40	495,000
5	4	3	167.05	22.65	209.35	23.25	343.10	19.65	545,000

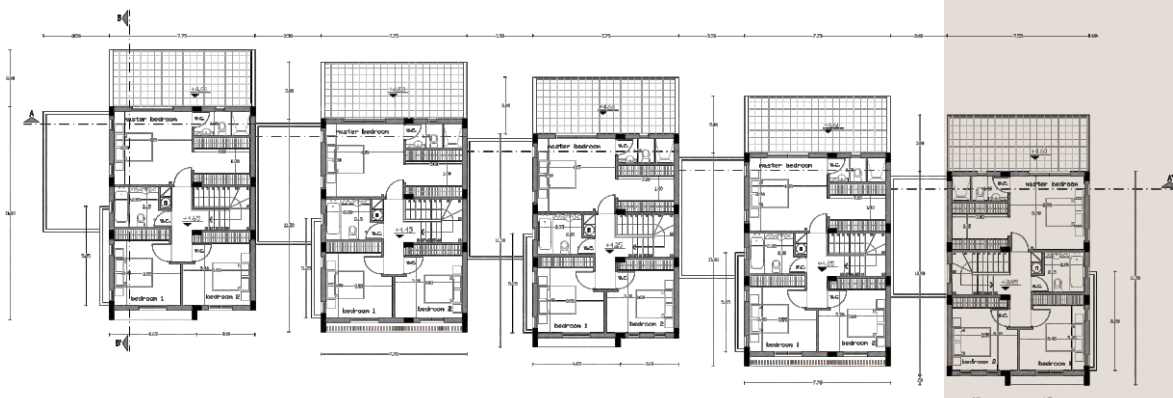
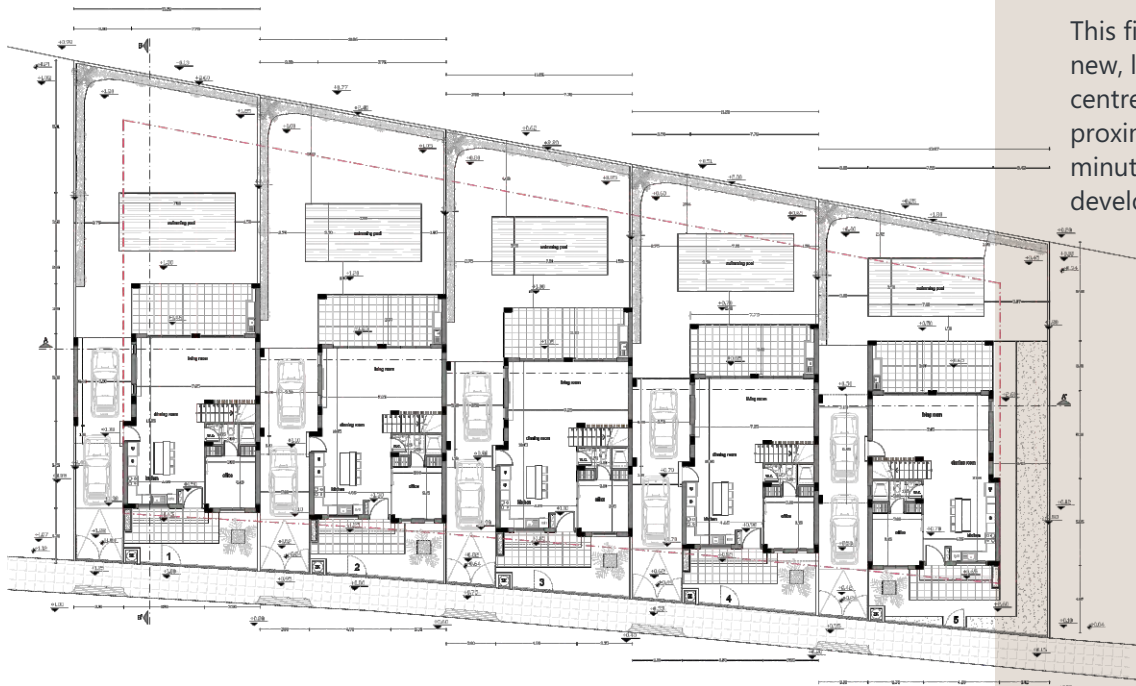






 Livadia City, Larnaca, a new local residential area, close to all amenities.

This five villa Project is nested in a new, local residential location in the centre of Livadia city, within close proximity to all amenities, only a 5 minute drive to the land of tomorrow development and the beach.







**ASSETPROINVESTMENTS LTD**  
PROPERTY CONSULTANTS & DEVELOPMENT

3 Galaxia Street, JGL Building, Block A, Shop 33, 7041 Larnaca, Cyprus (opposite Radisson Beach Resort)  
T +357 96 84 60 75 +357 99 34 74 62 :: E andrymchl7@gmail.com